

brewista®
Smart Scale II™

BSSRB2



QUICK START GUIDE

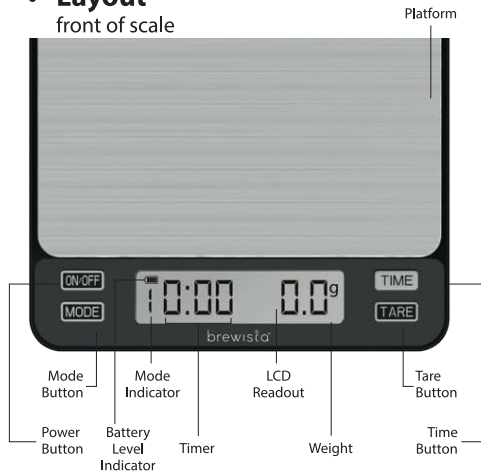
Start Here

• What's in the box?



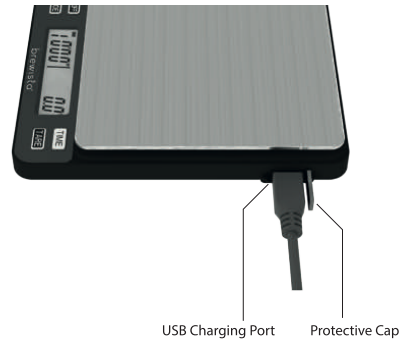
• Layout

front of scale

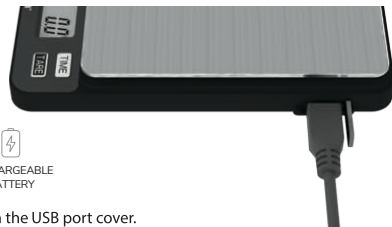


• Layout

side of scale

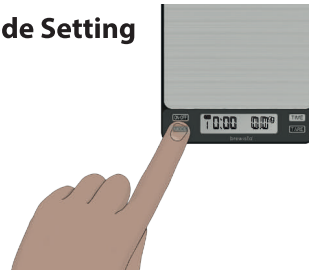


• Charging the Battery



- Open the USB port cover.
- Insert a USB-C cable (included) into the port.
- Insert the large end of the USB cable into a computer, charging port or other device for charging your scale's battery.
- The scale will automatically turn on to verify that the charging cord is correctly connected. We recommend turning off the scale manually at this time to reduce charging time.
- When charging is finished remove USB cable from scale and replace the port cover. **Do not overcharge battery.**

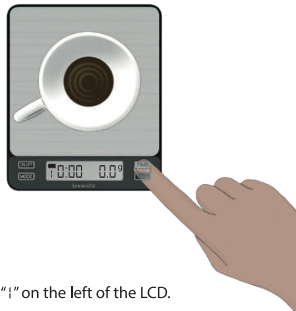
• Mode Setting



- Press "ON/OFF" button.
- Press MODE button.
- The display will read, "1", "2", "3", "4", "5", or "6".
- Press the MODE button again to toggle through these six modes.
- Switch the unit of measurement from grams to ounces by holding the [MODE] button down for about four seconds. Repeat this step to toggle back to measuring in grams.

• Mode 1

fully manual



- Mode indicator displays "1" on the left of the LCD.
- No automatic functions.
- User TARES and starts timer by pressing appropriate buttons.
- Timer is paused by pressing the TIME button. It will reset to 0:00 by pressing the TIME button once more.

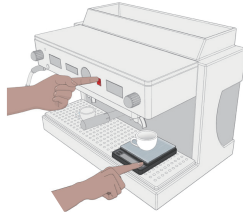
• Mode 2

for making espresso
(Auto-tare and Auto-timer
with immediate timer start)



- Mode indicator displays a "2" on the left of the LCD.
- Place cup on platform.
- Display will flash once.
- Weight will automatically TARE.
- Timer begins to count up.
- Weight is displayed as added.
- After cup is removed, the last time and weight are displayed for 5 seconds. Time then returns to 0'00" and weight returns to 0.0g.
- **Note:** Always lift items off of the platform. Sliding items may result in flawed readings.

• **Mode 3**
for making espresso
(Auto-tare and manual timer start)



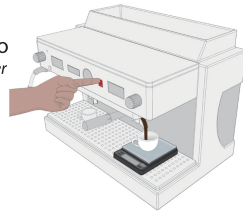
- Mode indicator displays "3" on the left of the LCD.
- Place cup on platform.
- Weight will automatically TARE.
- Press start button on espresso machine and TIME button on scale simultaneously.
- Timer begins to count up.
- Weight is displayed as added.
- After cup is removed, last time and weight are displayed for 5 seconds. Time then returns to 0'00" and weight returns to 0.0g.

• **Mode 4**
for making espresso
(Auto-tare only; timer is not active)



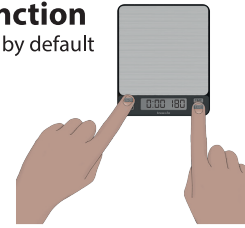
- Mode indicator displays "4" on the left of the LCD.
- Place cup on platform.
- Weight will automatically TARE.
- Weight is displayed as added.
- After cup is removed, last weight is displayed for 5 seconds. Weight then returns to 0.0g.

• **Mode 5**
for making espresso
(Auto-tare and Auto-timer with timer starting when liquid hits the cup)



- Mode indicator displays "5" on the left of the LCD.
- Place cup on platform.
- Weight will automatically TARE.
- When liquid hits the cup, the timer automatically starts to count up.
- Weight is displayed as added.
- After cup is removed, last time and weight are displayed for 5 seconds. Time then returns to 0'00" and weight returns to 0.0g.

• **Auto-off Function**
set to 180 seconds by default



- Turn off the scale.
- Press and hold ON/OFF button.
- While holding the ON/OFF button, press the TARE button 4-5 times quickly until "180" is displayed.
- Release both buttons.
- Press the MODE button to switch between "0/60/120/180" seconds. (If "0" is selected, the Auto-off function will be disabled.)
- After choosing desired time, press the ON/OFF button again.
- The display will show "PASS" to confirm this setting.
- The scale will turn off automatically.
- Please note: To keep a longer battery life, please turn off the scale by pressing ON/OFF button after each use.

• **Mode 6**
pour over brewing

1



- Mode indicator displays "6" on the left of the LCD.
- Place brewing vessel on platform.
- Weight will automatically TARE.

2



- Add coffee grounds.
- Adjust amount of coffee grounds.
- Once platform is stable press the TARE button.

3



- Add water.
- Display will flash once.
- Timer begins to count up.
- Weight is displayed as added.
- After cup is removed, last time and weight are displayed for 5 seconds. Time then returns to 0'00" and weight returns to 0.0g.

• **Silicone Pad**

Use of the silicone pad is optional. It is included to provide additional water resistance. It also prevents slight weight variations caused by abrupt temperature changes on the platform.



- Place the silicone pad onto the platform with the Brewista logo oriented to be read left to right.
- Ensure that the pad covers the platform completely without interfering with platform travel.
- The silicone pad is dishwasher safe (top rack).

• **Washing Instructions**

- Wipe scale clean with soft, damp cloth.
- Do not submerge the scale in water. Doing so may require excessive drying time and damage the scale.
- Do not press hard on the platform.
- Dry the exterior of the scale with a soft cloth or leave to dry on a dish rack with the LCD and buttons pointing up.



brewista® Smart Scale II™

B55RB2

510 W. Central Avenue, Brea, California 92821, USA | www.brewista.co
Toll Free in North America: 1-800-651-4726